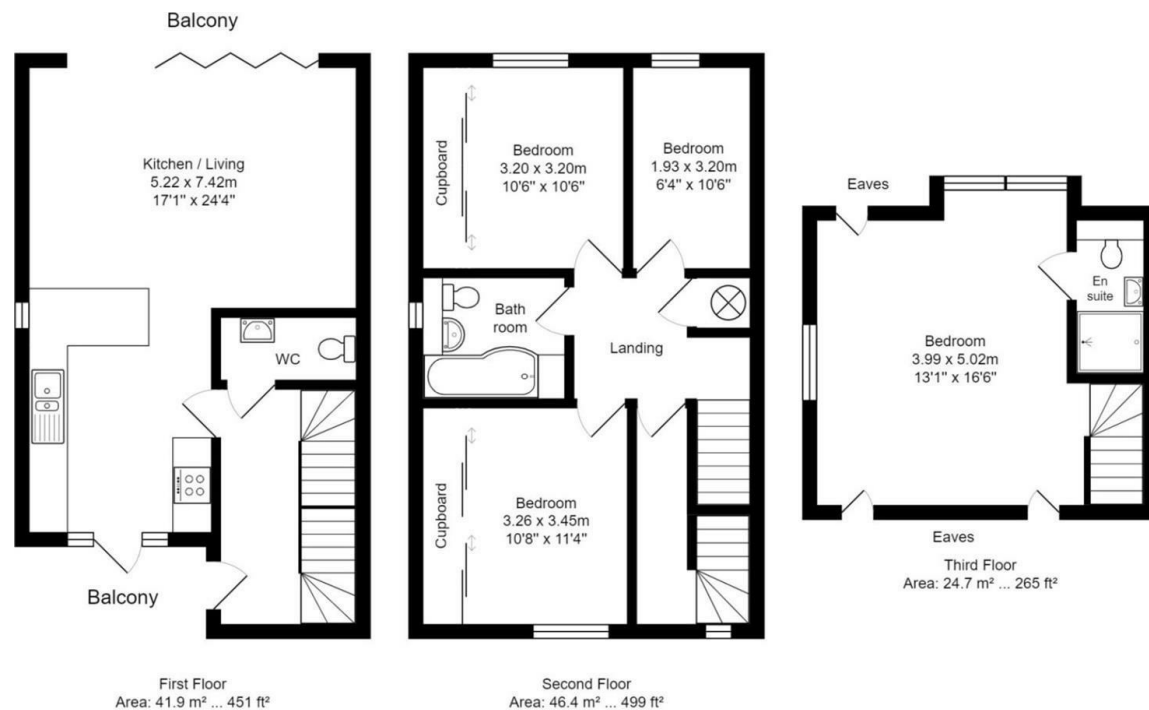
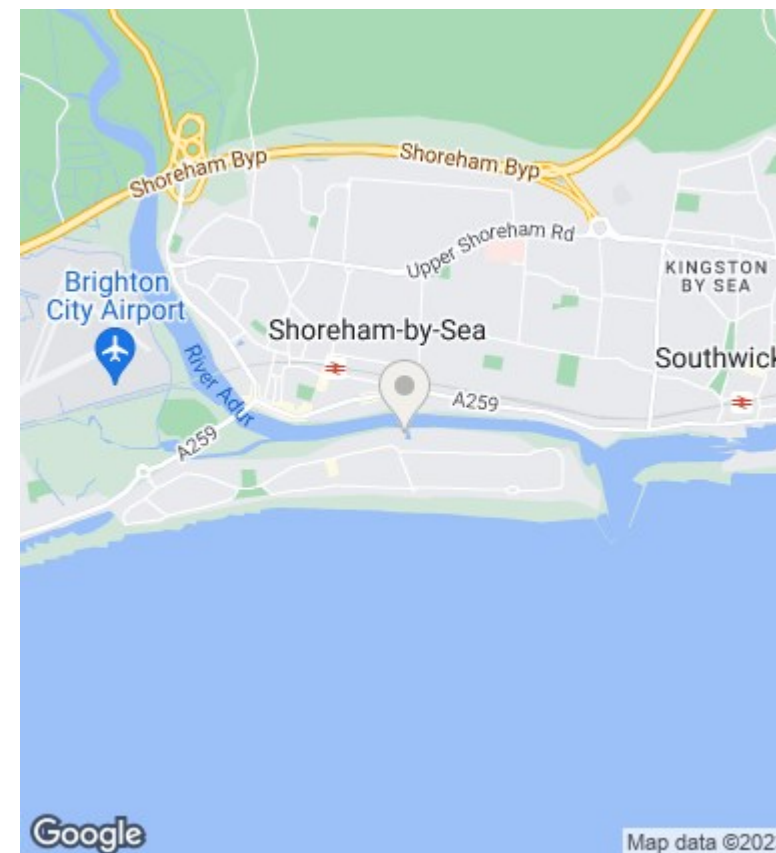




1 King John Court Emerald Quay, Shoreham-By-Sea, West Sussex,
£1,995 Per Calendar Month



1 King John Court, Emerald Quay, Shoreham-by-sea, BN43 5JQ
 Total Area: 156.2 m² ... 1682 ft²
 All measurements are approximate and for display purposes only.
 Copyright Oliverwiltshire.com 2022



Directions

Viewings

Viewings by arrangement only. Call 01273454234 to make an appointment.

Council Tax Band

EPC Rating:

D

Energy Efficiency Rating		
	Current	Potential
Very energy efficient - lower running costs		
(92-plus) A		
(81-91) B		
(69-80) C		71
(55-68) D	56	
(39-54) E		
(21-38) F		
(1-20) G		
Not energy efficient - higher running costs		
England & Wales	EU Directive 2002/91/EC	